

S.H. Ervin Gallery

Upcoming Exhibitions

Salon Des Refusés:

The alternative Archibald & Wynne prize selection

Until 19 June

Each year since 1991 the S.H. Ervin Gallery has invited a panel of guest selectors to go behind the scenes at the Art Gallery of New South Wales to choose an alternative exhibition of portraits and landscapes from the hundreds of entries to the Archibald and Wynne Prizes. Our annual exhibition now rivals the official prize show and stimulates popular debate on differing approaches in contemporary art.

Vote for the Holding Redlich People's Choice Award and enjoy weekly talks by exhibiting artists and their sitters at our Public Program series on Sundays at 3pm.

Principal sponsor:



ZHONG CHEN: Poh (Portrait of Poh Lin Yeow) - detail, 2009 oil on linen, 190 x 120 cm. Courtesy the artist

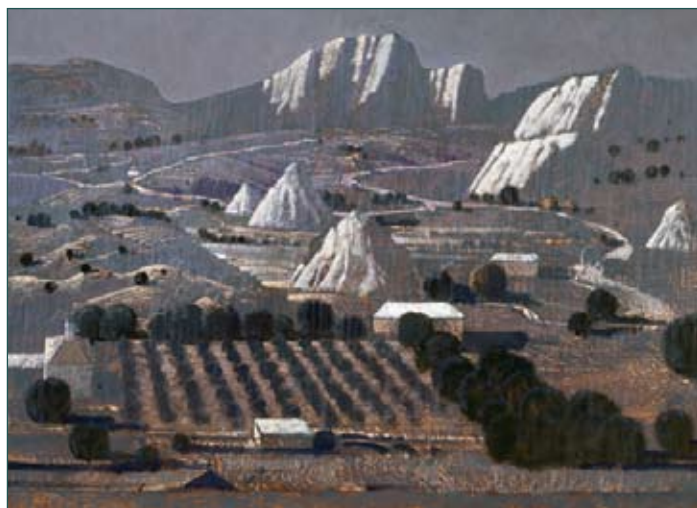
The Promised Land:

The art of Lawrence Daws

24 June – 7 August

The Promised Land: The Art of Lawrence Daws is a major touring exhibition that celebrates the life and career of long-time Glasshouse Mountains resident and iconic Australian painter, Lawrence Daws. In recognition of his unique place in Australia's art history, the exhibition features over 50 paintings and sketch books from state, regional, public and private collections, including work from each of the six decades during which this respected artist has been painting.

Lawrence Daws (b1927 Adelaide) has enjoyed a long and successful career as a painter and printmaker. While early influences on his career included the likes of Hans Heysen, Arthur Streeton and Lloyd Rees, over the years Daws developed a passion for symbolism and his work was filled with his own personal lexicon of images. Lawrence Daws's work is represented in every major Australian public collection, as well as major international collections including the Tate Gallery in London. This exhibition provides the first opportunity to view a comprehensive group of works by this significant Australian artist.



LAWRENCE DAWS: Summer landscape (detail) 1994 oil on canvas 122 x 137cm

First Night

Well-known humourist, broadcaster and author Wendy Harmer was special guest speaker for the opening of *Wendy Sharpe: The Imagined Life* at the S.H. Ervin Gallery in February. She regaled guests with stories relating to the name Wendy and how they tended to have the same personalities – confident and forthright. She also revealed that her own portrait painted by Archibald winner Wendy Sharpe had captured her naked and she shared the experience with guests.

S.H. Ervin Gallery Spring Book Fair

Saturday, 10 September 10am-4pm

Donations of new and old books and art catalogues are sought, so please bring anything you have to the S.H. Ervin Gallery, during normal opening hours, by Wednesday 31 August.

Opening Times:

Tuesday-Sunday, 11am-5pm

Closed on Mondays, public holidays and for exhibition changeover.

Cost: National Trust members \$4, non-members \$7, seniors and concessions \$5, children under 12 free

Information: P: (02) 9258 0173 or www.nationaltrust.com.au

E: shervingallery@nationaltrust.com.au

At: Watson Road, Observatory Hill, The Rocks, Sydney. Limited parking on site.



Wendy Sharpe and Wendy Harmer (Photo by Chloe Ferrer)