



---

# ***FAMILY TREASURES***

A Stage 2/3 HSIE education program at Miss Traill's House, Bathurst

---



## Teachers Kit



## CONTENTS

<b>Background Information</b>	3
- A brief history of 321 Russell St (Miss Traill's House)	
- Ida Traill and her family history	
<b>Miss Traill's House Timeline</b>	5
<b>Aims of <i>Family Treasures</i></b>	6
<b>Description of <i>Family Treasures</i></b>	6
<b>Pre-visit activities</b>	7
- Understanding the purpose of Family Trees	
- What to bring	
- Ida's Quest website	
<b>Post-visit activities</b>	8
- Art activity	
- Family Tree and family history activity	10
<b>Finding out more about conservation and heritage organisations</b>	11
<b>Program resources for <i>Family Treasures</i></b>	12

## Background Information

### A brief history of 321 Russell St (Miss Traill's House)

321 Russell St is one of the most historic buildings in Bathurst first built and occupied by a parish minister who received 2 lots from a crown grant.

The Reverend Sharpe was the rector of the parish of All Saints. In 1845 he built the house at Russell St for his family. When the house was built it was situated on the outskirts of Bathurst at the very end of Russell St which was a dirt road. During this time more people lived out of Bathurst than in the town itself and many of the Reverend's days would be spent visiting people in the district in his buggy.

After a brief period as a school for girls called Wyoming Lodge, the property was sold to local builder William McLean in 1904. McLean worked in Bathurst on major public buildings including the beautiful majestic dome of the Bathurst Courthouse. He updated the house at 321 Russell St to give it a Federation look.



The McLean Family at 321 Russell St

In 1923 William McLean moved to Sydney and sold the house to Robert Gilmour a local grazier. The Gilmours added the garage and enclosed some of the verandahs, making fairly minor and poor quality modifications. In 1932 the Gilmours rented the house to a widow, Mrs Gertrude Emily Traill and her daughter Miss Ida Traill aged 42. The Traill occupation of 321 Russell St had begun.

### Ida Traill and her family history

Ida Traill was born in 1889 and was raised in suburban Sydney in Burwood. This was followed by a period at the Traill owned property in the Bylong Valley between Mudgee and Lithgow and a final move with her mother Gertrude to Bathurst.



Ida Traill aged 11

It was through her mother that Ida had strong family associations with the foundation of the Bathurst district.

Ida's great grandparents Thomas Kite and William Lee were part of this first European settlement - west of the Blue Mountains. This settlement led to bitter conflict with the traditional owners - the Wiradjuri people and eventually resulted in vast pastoral properties and great family wealth for the settlers.

Thomas Kite had been transported for theft in 1813 and received a pardon to take up a land grant at Kelso in the Bathurst district. His fellow pioneer in this venture which involved 10 men, was Miss Traill's other great grandfather William Lee who was born on Norfolk Island in 1794 to convict Mary Smith. In 1818 aged 28, William was given government cattle and a land grant at Kelso by Governor Macquarie

The two pioneering families - the Kites and the Lees, were linked by the marriage of George Lee and Emily Kite, Ida's grandparents. George Lee was born into the great pastoral boom of the 1830's which was the main economic driver of the colonial economy. Like his father, George was involved in the breeding of prime stock, including bloodstock for the racing industry,



Ida visiting her grandparents at Leeholme

where the horses he bred won many races including the gold Sydney Cup of 1870 and the

Melbourne Cups of 1866 and 1899. Ida Traill spent many holidays visiting her grandparents at the Leeholme mansion in Kelso with its magnificent horse stables and paddocks.



George Lee, Ida's grandfather.

Through inheritance and purchase Ida acquired a significant collection of artefacts relating to four generations of the Lee family in Bathurst. These items, together with her own furniture, furnishings, paintings and ceramics were left to the National Trust in 1976 along with the house and grounds at 321 Russell Street Bathurst.



Ida Traill with her family treasures.

## MISS TRAILL'S HOUSE TIMELINE

<b>Year</b>	<b>Event</b>
Pre 1815	Wiradjuri traditional land.
1815	Governor Macquarie chooses the site of Bathurst township.
1833	Bathurst town surveyed.
1841	Reverend Thomas Sharpe arrives as second rector of the parish of All Saints and takes the land on 321 Russell Street to build his house.
1896 – 1902	Mrs Newton rents the house for the girls school 'Wyoming Lodge'.
1905	William McLean, a builder, buys the house and makes additions (he also built the dome of the Bathurst Courthouse).
1923	House sold to local grazier Robert Gilmour who built the garage and enclosed some of the verandahs.
1932	House rented to Mrs Gertrude Traill and her daughter Ida.
1937	Gertrude and Ida purchase the house.
1957	Gertrude Traill dies.
1976	Ida Traill dies.
1977	The house and its contents are given to the National Trust by Ida in her Will. As part of the gift Ida wanted the Sydney Gold Cup to be displayed once a year.
1977 – present	The house continues as a house museum known as Miss Traill's House

## **Aims of *Family Treasures***

This program is aimed at Stage 2 HSIE students and encourages students to:

- Understand the roles of individuals, families, groups and events in maintaining, developing, strengthening and changing communities
- Use maps to identify key features of natural and built environments
- Develop skills in the location and evaluation of information from a variety of sources
- Use family trees and timelines to communicate information

## **Description of *Family Treasures***

***Family Treasures*** invites students to form small groups and engage in different activities. During the program students:

- View a brief introductory video about Ida Traill and her pioneer ancestors
- Explore the house using Ida Traill's Family Tree to look for connections between her family and the pictures, objects and furniture Ida treasured. Students also reflect on how different or similar the house and the lifestyle it reflects is to their own family home.
- Take on the role of detectives to determine the story of the owners of three different suitcases and trunks. Students examine clothing, objects, images, letters, diaries and books to piece together a story that they can tell the others based on the evidence they have found.
- Interpret a site map of the property to explore and document garden and house design, ornaments and features.

If time allows, students may also

- Explore a section of the neighbourhood and compare the different types of housing. Through observation of house style, location and features, students reflect on the types of people the houses were designed for and the society in which they lived.

## Pre-visit activities

### Understanding the purpose of Family Trees

Ask the students to list all of the people in their immediate family. From this list they can take it further to the mothers, fathers, sisters, brothers of their parents. Ask them to see how far back they can go. As home research ask them to find out the names, birth dates and death dates of these relatives.

In the class room discuss how this information can be put into the form of a family tree and discuss how diagrams are used to sort and communicate information.

Demonstrate how family trees are made and ask them to transfer their family names and dates on to this tree.

The idea of family history and passing down of possessions and stories can be followed up after the visit.

### What to bring

The students will be divided into three groups, it would assist the guides if a teacher or parent could accompany each group.

On the day of the visit to Miss Traill's House, students will need a copy of:

Ida Traill's Family Tree .  
Plan of Miss Traills House and garden.  
Suitcase activity sheets.  
(For copies please see Program Resources)  
Students will need to bring a pencil.

Miss Traill's House has a large verandah and extensive gardens for students to have their lunch or snack. There are no drinks or food available for purchase on site. There are adequate toilet facilities for the students to use.

### Ida's Quest website

The aim of Family Treasures is to stimulate students to think about how family histories form part of larger community histories. If possible take students through the *Ida's Quest* website [www.nsw.nationaltrust.org.au/idasquest.html](http://www.nsw.nationaltrust.org.au/idasquest.html) which uses a narrative and riddles to involve students in a journey to the past and to make connections with present.

## **Post-visit activities**

### **Art activity**

In Miss Traill's House there are many portraits of Ida's grandmother Emily as a young girl to an old woman. As an art activity get the students to think about how they will physically change as they get older. Try to avoid just thinking just about wrinkles, encourage them to think about what happens to peoples weight, hair, eyes, expression etc. Discuss how character, status and personality can be conveyed in portraits. Use the images of Emily Lee to discuss these aspects as well as the differences between painted portraits and photographs.

Students can use their own family portraits and photos to think about aging. Students look at family photographic albums to see how people change over time and observe the differences – they can do this at home or in the classroom.

Use images of artists' self portraits over time to prepare the students, for example they could refer to Rembrandt's images of himself over 50 years. Show them paintings or photographs of people at different ages. Use magazines as a reference as well as.

#### **Use a variety of mediums to explore the theme of portraiture and aging:**

- **collage**
- **clay**
- **drawing**
- **painting**
- **photography**

### The three ages of Emily Lee (1843 – 1904) – Ida Trill's Grandmother



Emily Lee as a girl



Emily Lee as a young woman



Emily Lee as an old woman

## **Family Tree and family history activity**

### **Re-cap on family trees**

Use Miss Traill's Family Tree to remind students how family history can be recorded. Go through the format of Miss Traill's family tree to remind students of the fact that Miss Traill ended up with all of the treasures from her family because she was the last one to survive. Many of her aunts and uncles either never married or had no children. Also re-cap on how Ida's pastoral and horse breeding family heritage was reflected in the objects, paintings and photographs in her house.

### **Research**

At home, students ask an older member of their family, a grandparent, great grandparent or parent about a special story of an event that happened in their family's past and why this story is important. Students ask their families for any objects or images from the past that their family now own that will help them tell this story to the rest of the class.

### **Final Presentation**

The students use their completed family tree combined with some of the family stories they have collected, along with the objects, photographs, names of places etc that they can use to tell the story of their family.

Over different lessons the students can present these stories with the props and family tree to the class.

### **Reflection and class discussion**

Lead a discussion based around the value of family histories, of fitting personal history into local history and broader history.

Do they think that they will be able to pass on the knowledge of their family and district to their children or to others?

Why is this important?

How do you find out more? Discuss the values of oral histories, archives, local history organisations, museums and libraries.

## Finding out more about conservation and heritage organisations

Different organisations look after and protect heritage sites in Australia. **The National Trust of Australia (NSW)** has 21 properties in NSW, these include nature sanctuaries, historic houses like Miss Traill's House as well as country homesteads

The Trust helps to conserve these heritage sites and provide opportunities for the public to visit them. The Trust is also interested in preserving important historic sites such as old buildings, monuments and cemeteries. Historic towns such as the villages of Rockley and Carcoar which are not far from Bathurst, have been included in the National Trust's list of places which they want kept for everyone to enjoy - have you ever visited these historic villages? The National Trust is also interested in preserving the natural environment such as Aboriginal sites, public parks and bushland.

The Trust is a community organisation and relies on funds from membership and government grants. If you want to find out more about the National Trust including membership, go to: [www.nsw.nationaltrust.org.au](http://www.nsw.nationaltrust.org.au)

Government organisations that are also involved in the conservation and presentation of Australia's heritage include the NSW Heritage Office [www.heritage.nsw.gov.au](http://www.heritage.nsw.gov.au) and the Historic Houses Trust [www.hht.nsw.gov.au](http://www.hht.nsw.gov.au) Information on your local area can also be found through local councils and the local history section of local libraries, as well as historical societies and museums.

## **Program resources for *Family Treasures***

Please do a copy of the following materials for students to bring with them to Miss Traill's House.:

***Ida Traill's Family Tree.***

***Plan of Miss Traill's House and Garden.***

***Mystery of the Suitcase Activity Sheets.***

# Miss Trail's Family Tree



William LEE (1794-1870)  
= Mary DARGIN  
(1799-1886)  
Married 1821



Thomas KITE (1789-1876)  
= Sarah BAYLISS  
(c.1804-1874)  
Married 1820  
(3 sons and 6 daughters)

John (1824-1909)  
m. Hannah DARGIN

Thomas (1826-1893)  
m. Fanny Eleanor TINDALE

Maria (1829-1923)  
m. James BRADY

Eliza (1831-1836)  
(died in infancy)

James (1831-1921)  
m. Jane Mary Nicols BLOMFELD

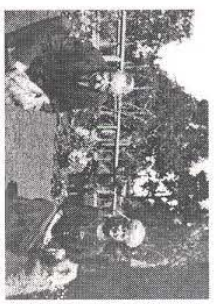
Elizabeth (1833-1995)  
m. George William LORD

George (1834-1912)  
Married 1860

Edward (1837-1888)  
(unmarried)

Henry (1840-1875)  
m. Kate DARGIN

Mary Jane (1843-1910)  
m. Robert Slier AUSTIN



Gertrude Emily (1861-1951)  
Married 1883

Frank (1862-?)  
(unmarried)

Ida Louise (1865-1943)  
= Charles Bruce MARRIOTT 1891

Walter George (1866-1912)  
(unmarried)

Arthur Edward (1866-1895)  
(unmarried)

Ernest (1868)  
(died in infancy)

Edith Mary (1869-1901)  
= Robert ABDY 1900  
= JAMES c.1872 = John J.W. POWER 1915 (assad)

Nellie (1874-1936)  
(unmarried)

Amy Millicent (1877)  
(died in infancy)

Beatrice (Tissie) (1878-1969)  
(unmarried)

Ellie Ocasione (1879-1957)  
m. Stephen Ball (1879-1955) noc

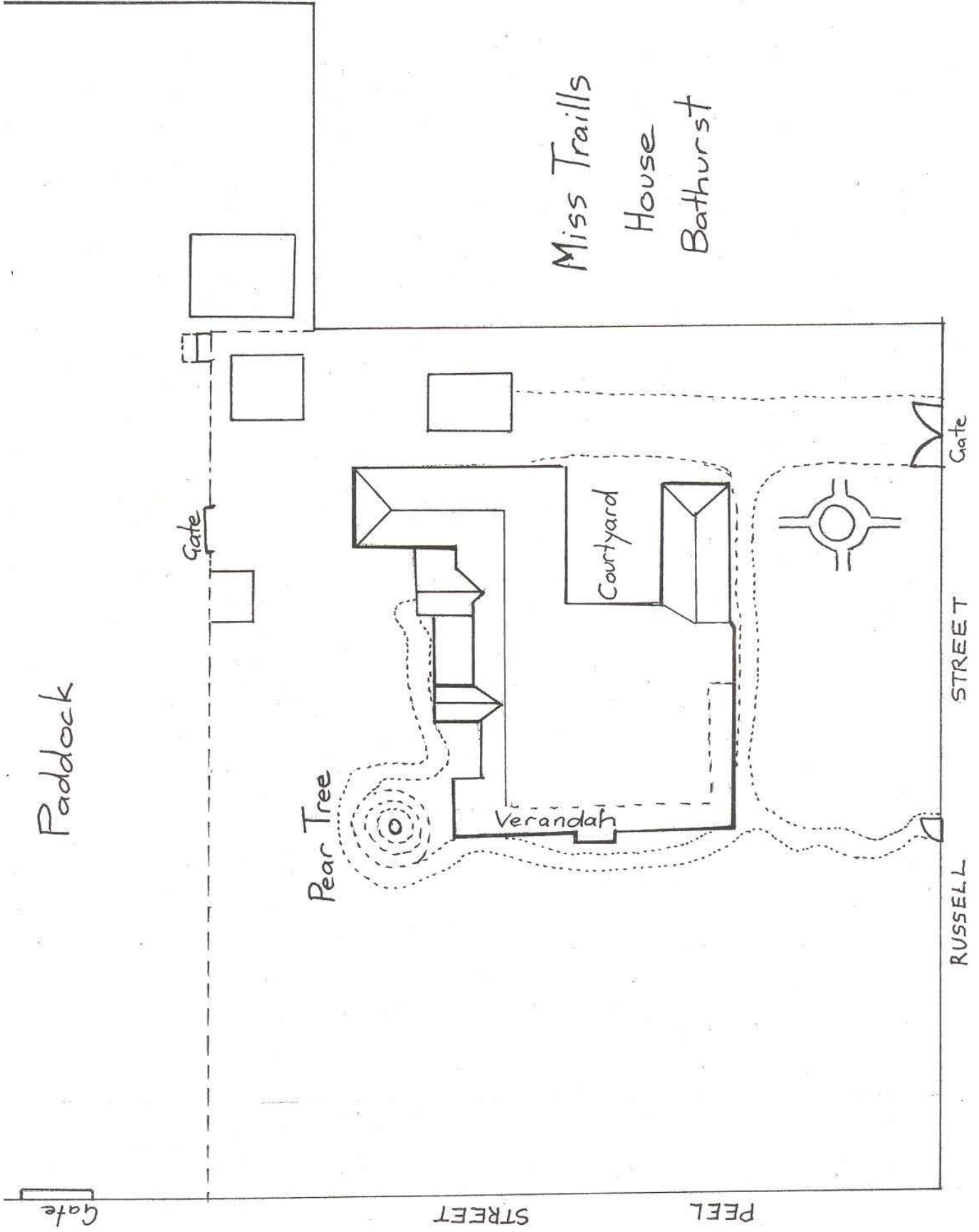
Harold George TRALL (1859-1914)

Charles George Lee MARRIOTT (1892-?)  
(no children)



Ida Gertrude (1889-1976)  
(unmarried)





**Mystery of the Suitcase Questions**

<b>Question</b>	<b>Answer</b>	<b>What object tells you this and why</b>
What is the name of the owner of the objects?		
How old was the person when these objects were put in this suitcase?		
Where did they live?		
Did they work? What did they do?		
Who was in their family?		
Who did they care about? Who was closest to them?		
Were they rich or poor?		
What sort of things did they like to do?		
What sort of things happened to them?		

**STORY FROM THE SUITCASE:** Write a short story about the person who owned the contents of the suitcase based on what you have found out.